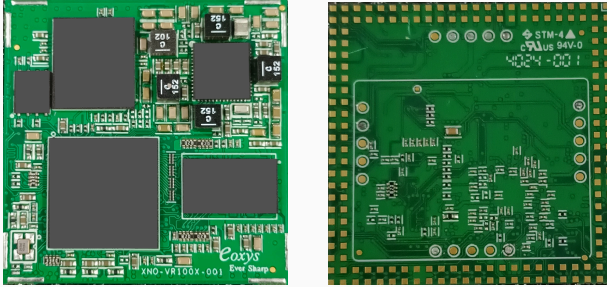


## XENO+ Vision ML SOM



**XENO+ Vision ML SOM with solderable footprint with 176 pins**  
Size : 40mm X 40mm

- XENO+ Vision ML (Machine Learning) SOM (System-On-Module) module is a production ready solderable SOM Module and can be used as core CPU module for building Linux OS based Video/Image based edge AIML devices by Customers.
- Supports 2MP to 5MP @ 30FPS RGB/RGB-IR video/ Image in MIPI CSI-2 format
- Built-in AI Engine with 1TOPS useful for running DNN/CNN on video/ image data

## XENO+ Vision ML SOM Specifications

	HA Vision ML SOM
Main CPU	Single/Dual ARM Cortex A55 @ 1.2GHz
MCU	ARM Cortex M33 @ 200MHz
RAM	16Bit 512MB DDR4-1600 (Upto 2GB)
Flash	8GB eMMC Flash (Upto 32GB)
Serial Flash	16MB Serial NOR Boot flash
ISP	Simple ISP
AI Accelerator	DRP-AI Accelerator
Video CODEC	H.264 Enc/Dec 2K/30fps
Graphics Engine	ARM Mali-G31 3D GPU
Camera Interface	1x MIPI CSI-2 (4 lanes)
Display Interface	1x MIPI DSI (4 lanes)
Ethernet	2x RGMII Gigabit Ethernet interface
SD Interface	1x SD interface for WiFi module or SD Card
USB	2x USB2.0
Other Peripherals	4x I2C, 5x UART, 2x SPI, 8x ADC, 2x CAN-FD
OS	Linux OS

## XENO+ Vision ML SOM Symbol



## Target Devices

- Smart Video Doorbell/Intercom
- Smart Point of Sales
- Smart AI Camera
- Smart HMI Table

## Target Applications

- People counting and tracking
- Face detection and recognition
- Human / pet / vehicle classification
- Object classification, recognition, and more
- License plate recognition

